

Minimal beauty, mindful skin care

Formulation guidelines



Lamberti
personal care

Designing
new values
in chemistry

Lamberti Technologies for Personal Care.

Make Beauty Happen, Make Innovation Real.

Lamberti is a global manufacturer of chemical specialties focused on customers' needs. Thanks to its well-established Technological Platforms, Lamberti Personal Care is fully committed to target consumers' requirements with high-quality, performant ingredients. Each product within our portfolio is innovation-driven and designed to open new perspectives, supporting our customers in the development of the formulations of tomorrow.

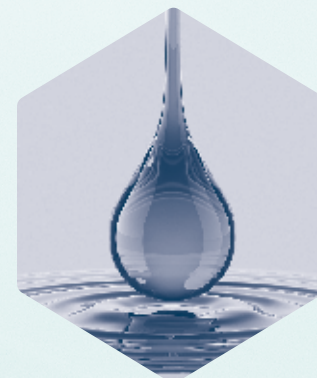
Our approach for Personal Care combines a very strong knowledge, built over decades, with a seamless search for new advanced solutions. Working alongside our customers, we help transforming experience into

groundbreaking raw materials, providing a unique tailor made service.

This made our brands ESAFLOR®, VISCOLAM® and EUCAROL® appreciated and recognized worldwide.

All new developments supported by our R&D laboratories are committed towards sustainability and environmentally friendly chemistry, in compliance with regulatory requirements.

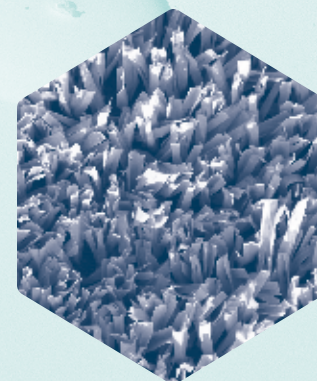
To better focus on formulation design Lamberti has integrated Kalichem, who has a well-recognized know-how in the world of cosmeceuticals and synergistic ingredients.



OLEOCHEMICALS



NATURAL POLYMERS



SYNTHETIC POLYMERS

Allow your real skin to shine through.

With an industry dominated by gilded jars of face creams and mystery ingredients, skincare routines have become long and complex. Many have long been under the impression that more is more: the more active-packed products you apply, the glowier your skin will be.

Rebel against this hectic lifestyle. It is better for the environment and for your skin to take it back to basics, for a more meaningful daily experience. You can take the time to enjoy your beauty and skincare routines. Cleanse gently, exfoliate slowly and hydrate deeply: slow beauty lets your natural skin texture shine through.

It is all about loving your skin and how it is in everyday life. Choose products that can multitask and do it well. Use fewer steps with a higher payoff, committing to a simple and more sustainable, effortlessly chic routine, to enhance your skin natural beauty.

Mindful Skin Care is a capsule collection of high-quality, multitasking products that enhance skin over time rather than take a toll on it.

Embrace mindfulness:

less is more when it comes to ingredients, packaging and beauty steps!



Green tea cleanser

A cleansing gel combining optimal detergent efficacy with exceptional mildness, to gently cleanse your skin while supporting its hydration. Its peculiar combination of surfactants creates a very elegant texture and a pampering skin feel. PCA derivatives help nourishing and moisturizing the skin, while Green Tea soothes and protects it with a rebalancing effect.

EUCAROL® AGL 35 MB is a **naturally derived**, mild anionic surfactant. It derives from L-Glutamic acid, an amino acid naturally present in human hair and skin, and natural fatty acids. It shows good foaming properties, especially at the skin pH, providing a very fine, **mousse-like foam**. It is manufactured and certified according to the RSPO's Mass Balance supply chain model.

EUCAROL® AGE/EC MB is an α -hydroxyacid derived surfactant, from renewable raw materials, ideal for **mild** and **natural** formulations. It is manufactured and certified according to the RSPO's Mass Balance supply chain model. It is also compliant to COSMOS and NATRUE standards.

EUCAROL® AGE/EC MB, in combination with EUCAROL® AGL 35 MB, can create a very elegant texture together with exceptional mildness.

LAMCOS 201

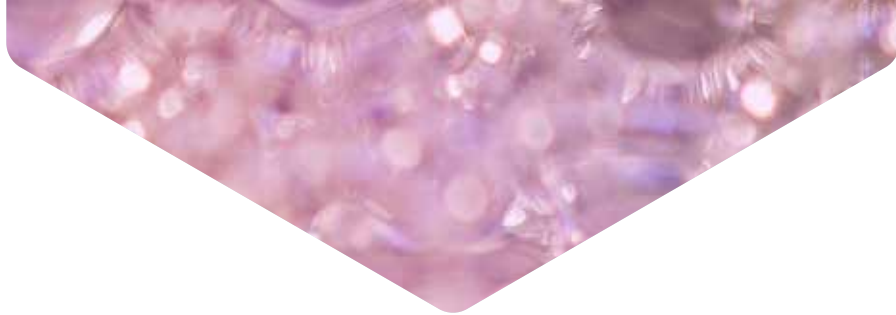
Phase	INCI name	Trade name	% w/w
A			
1	Aqua (Water)		To 100
2	Disodium EDTA		0.05
3	Disodium Cocoyl Glutamate	EUCAROL® AGL 35 MB	11.5
4	Lauryl Glucoside		13.3
5	Disodium Coco-Glucoside Citrate	EUCAROL® AGE/EC MB	6.2
6	Glycerin		2.5
7	Aqua, Potassium Olivoyl PCA, Sodium PCA (*)		2.0
8	Glycerin, Aqua, Camellia Sinensis Leaf Extract		0.5
9	Preservatives		q.s
10	Parfum (Fragrance)		q.s
11	Citric Acid, 20% soln.		To pH ~ 5.0

(*) OLIVOIL PCA FOKSNaB by Kalichem

General characteristics:

Appearance: clear yellowish viscous liquid
 Viscosity (Brookfield RVT, 25°C, 20 rpm): ~ 2000 mPa*s
 pH: ~ 5.0





Shine-through scrub

Anhydrous sugar scrub, enriched with a high amount of glycerin. Gentle and nourishing, it goes beyond exfoliation, deeply moisturizing and rebalancing the skin with Green Tea extract.

VISCOLAM® AT 100 P is a versatile and effective rheology modifier, emulsifier and emulsion stabilizer. It makes the formulation process easy and quick: it is supplied in a pre-neutralized, **ready-to-use**, liquid form and it is effective over a wide pH range. It is suitable for O/W emulsions. In glycerin-based anhydrous formulations, VISCOLAM® AT 100 P is ideal to **thicken** and **suspend** insoluble solids, such as sugar scrubbing particles.

EUCAROL® AGE C50 MB is an **α-hydroxyacid derived surfactant** in propylene glycol, from renewable raw materials, ideal for **mild** and **natural** formulations. EUCAROL® AGE C50 MB is manufactured and certified according to the RSPO's Mass Balance supply chain model. EUCAROL® AGE C50 MB is fully based on renewable sources and thus compliant to COSMOS standard.

STEROL CC/595 is an effective hydrophilic **emollient** with **superfattening** properties. It is especially suited for rinse-off applications such as cleansers, liquid soaps as well as shampoos and shower gels.

LAMCOS 202

Phase	INCI name	Trade name	% w/w
A			
1	Glycerin		To 100
2	Disodium Coco-glucoside Citrate, Propylene Glycol	EUCAROL® AGE C50 MB	2.0
3	Preservatives		q.s.
4	PEG-6 Caprylic/Capric Glycerides	STEROL CC/595	3.0
5	Sodium Polyacryloyldimethyl Taurate, Hydrogenated Polydecene, Trideceth-10	VISCOLAM® AT 100 P	3.0
6	Glycerin, Aqua, Camellia Sinensis Leaf Extract		0.5
7	Parfum (Fragrance)		q.s.
8	Sucrose		20.0

General characteristics:

Appearance: translucent gel with suspended sugar grains

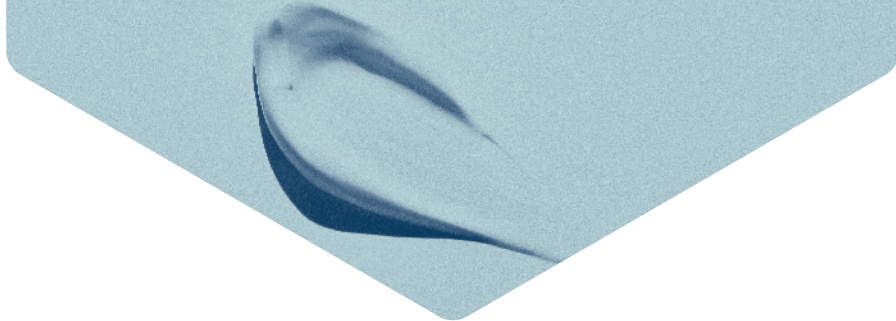


Genuinely radiant serum

Powerful, lightweight serum, that instantly melts onto the skin, delivering ultimate nourishment and hydration. It helps to smooth and brighten the skin, with Green Tea for a healthy look with a radiant complexion.

ESAFLOR® HM 22 is an excellent **emulsification-aid** for O/W emulsions. This unique bio-based polymer works in combination with the most common emulsifiers to create **distinctive textures** for skin care treatments. ESAFLOR® HM 22 can deliver lightweight textures that blend easily into the skin.

VISCOLAM® AT 100 P is a versatile and effective **rheology modifier, emulsifier** and emulsion **stabiliser**. It makes emulsions' formation easy and quick: it is supplied in a pre-neutralized, ready-to-use, liquid form and it is effective over a wide pH range. It is suitable for O/W lotions, creams and butters, as well as for gels with high solvent content. Emulsions are extremely light and fast-breaking, enabling a quick absorption into the skin.



LAMCOS 204

Phase	INCI name	Trade name	% w/w
A			
1	Aqua (Water)		To 100
2	Glycerin		5.0
3	Trisodium Ethylenediamine Disuccinate		0.1
4	C18-22 Hydroxyalkyl Hydroxypropyl Guar	ESAFLOR® HM 22	0.1
5	Citric Acid, 10% soln.		To pH ~ 5.5
6	Isononyl Isononanoate		10.0
7	Sodium Polyacryloyldimethyl Taurate, Hydrogenated Polydecene, Trideceth-10	VISCOLAM® AT 100 P	2.5
8	Parfum (Fragrance)		q.s.
9	Glycerin, Aqua, Camellia Sinensis Leaf Extract		0.5
10	Preservatives		q.s.
11	Citric Acid, 10% soln.		To pH ~ 5.5

General characteristics:

Appearance: white smooth emulsion
 Viscosity (Brookfield RVT + Helipath, 10 rpm, 25°C, 30''): ~ 15000 mPa.s
 pH: ~ 5.5

Truly glowing cream

Pamper your skin with this complete formula that boosts skin's moisture, cushioning it and allowing it to reflect more light, appearing more radiant. It contains Zinc PCA, to help normalizing sebum production while limiting bacterial proliferation, as well as giving a balanced moisturisation.

ESAFLOR® HM 22 is an excellent **emulsification-aid** for O/W emulsions. This unique **bio-based** polymer can help creating distinctive textures, from lotions to thick creams, working in combination with the most commonly used emulsifiers. Suitable for a wide range of personal care applications, including skin care, ESAFLOR® HM 22 conveys pleasant textures and a light after feel.

LAMCOS 205

Phase	INCI name	Trade name	% w/w
A			
1	Aqua (Water)		To 100
2	Glycerin		3.0
3	Trisodium Ethylenediamine Disuccinate		0.1
4	C18-22 Hydroxyalkyl Hydroxypropyl Guar	ESAFLOR® HM 22	0.3
5	Citric Acid, 10% soln.		To pH ~ 5.5
B			
1	Cetearyl Alcohol		2.4
2	Cetearyl Glucoside		0.6
3	Isononyl Isononanoate		10.0
4	Caprylic/Capric Triglyceride		5.0
C			
1	Parfum (Fragrance)		q.s.
2	Preservatives		q.s.
3	Aqua, Zinc PCA (*)		0.5
4	Sodium Hydroxide, 10% soln.		To pH ~ 5.5

(*) KALIZINC by Kalichem

General characteristics:

Appearance: white glossy emulsion
 Viscosity (Brookfield RVT + Helipath, 10 rpm, 25°C, 30''): ~ 40000 mPa.s
 pH: ~ 5.5

Simply relaxing mask

Take a moment to relax and care for your skin with this face mask, that guides your skin back to a state of balance. Packed with a functional mixture of moisturizing substances, typical of skin's NMF, it regulates moisture and offers welcome relief and relaxation to sensitive, easily irritated skin.

ESAFLOR® HM 22 is an excellent **emulsification-aid** for O/W emulsions. This unique **bio-based** polymer can help creating distinctive textures, from lotions to thick creams, working in combination with the most commonly used emulsifiers. Suitable for a wide range of personal care applications, ESAFLOR® HM 22 can deliver pleasant textures, with a **rich playful touch**.



LAMCOS 203

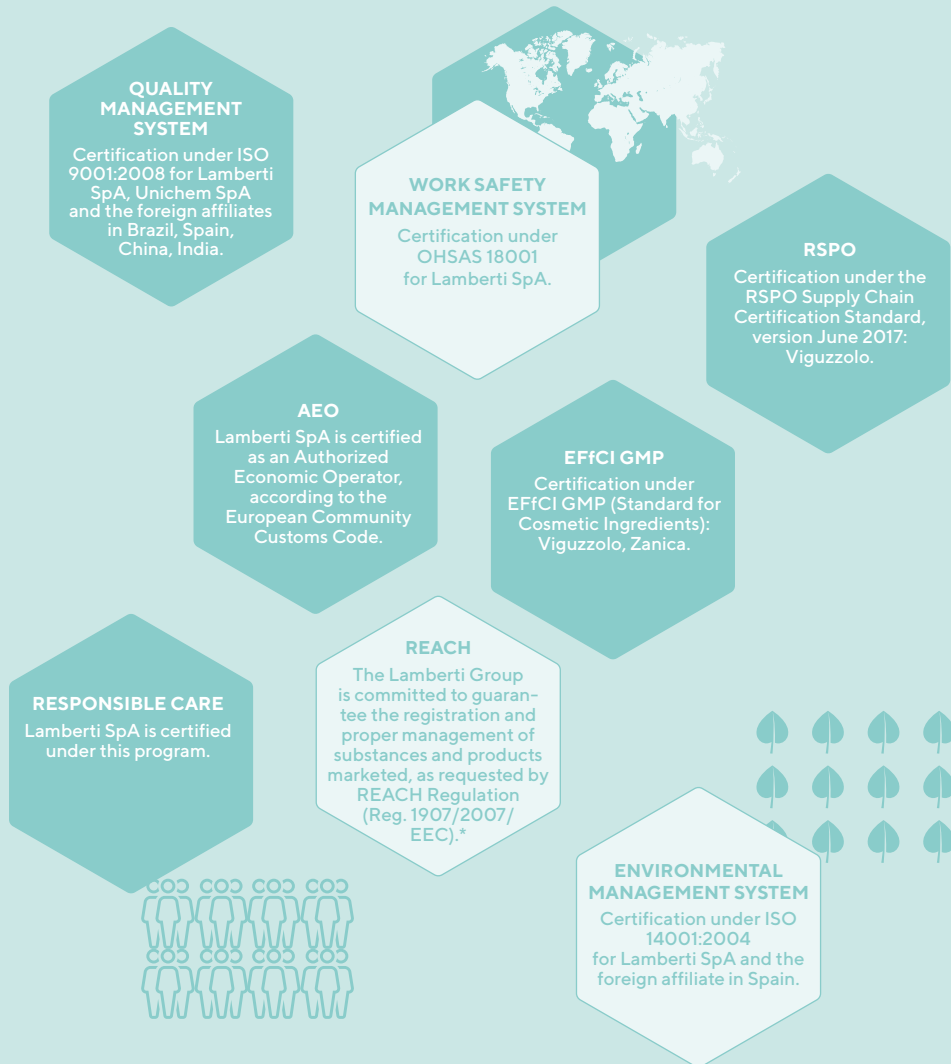
Phase	INCI name	Trade name	% w/w
A			
1	Aqua (Water)		To 100
2	Glycerin		5.0
3	Trisodium Ethylenediamine Disuccinate		0.1
4	C18-22 Hydroxyalkyl Hydroxypropyl Guar	ESAFLOR® HM 22	0.1
5	Citric Acid, 10% soln.		To pH ~ 5.5
B			
1	Sodium Stearoyl Lactylate		1.0
2	Polyglyceryl-3 Dicitrate/Stearate		2.5
3	Cetearyl Alcohol		3.0
4	Isopropyl Myristate		5.0
5	Isononyl Isononanoate		5.0
6	Caprylic/Capric Triglycerides		5.0
C			
1	Preservatives		q.s.
2	Parfum (Fragrance)		q.s.
3	Urea, Glucose, Fructose, Hydrolyzed Wheat Protein, Sodium Glutamate, Glycine, Lysine, Malic Acid, Tartaric Acid, Citric Acid, Glycolic Acid, Lactic Acid, Sodium PCA, Hydrogenated Starch Hydrolysate, Aqua (*)		2.0
4	Citric Acid, 10% soln.		To pH ~ 5.5

(*) KEMIDERM NMF VEGETAL by Kalichem

General characteristics:

Appearance: white smooth emulsion
 Viscosity (Brookfield RVT + Helipath, 10 rpm, 25°C, 30''): ~ 80000 mPa.s
 pH: ~ 5.5

Lamberti certification and more.



BELIEVING IN THE LABEL, meeting the demands of certified ingredients

Lamberti is fully committed to providing high quality materials and sustainable solutions. We operate according to the highest standards in terms of quality, safety and environmental protection, in compliance with the more accredited certifications for environmental respect. Our commitment is recognized by several certifications: we developed a list of approved chemicals deemed truly natural and conform to **Cosmos** and **Natrue** cosmetic standards.

The **Halal** label is gaining popularity in the cosmetics industry. Halal certification is a strict and carefully controlled process; several criteria are evaluated, from raw materials to manufacturing facilities. ESAFLOR® line is produced in a plant that fully meets all requirements for Halal Quality Control.





For more information please contact:

Personal Care Headquarter | Via Marsala, 38/d
21013 Gallarate (VA) | Italy
T + 39 0331 715 824 | cosmetics@lamberti.com
personalcare.lamberti.com